

A driver must be installed on the PC in order to use the ZIP-USB-MP. This driver can be downloaded from the Belimo website (Download section). Once the driver has been installed, the ZIP-USB-MP is logged in on the PC as a virtual COM port.



Supported operating systems

- Windows 7
- Windows VISTA
- Windows XP
- Windows 2000

Preparation

Download the zipped "Driver_ZIP-USP-MP.zip" file from the Belimo website (Download section) to a folder on the hard disk of your computer. Then extract the ZIP file.

Installing

Note

Administrator privileges are required for the installation

- Connect the ZIP-USB-MP to the USB port on your computer. The computer reports that it has detected new hardware and opens the following screen automatically: Hardware Update Wizard.
- Click the radio button: Install from a list or specific location (Advanced).

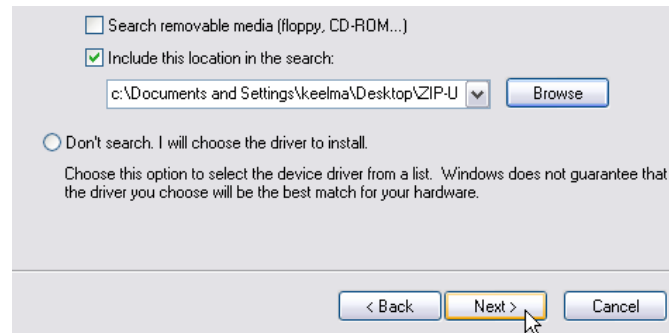


- Then click "Next".

Installing

(Continue)

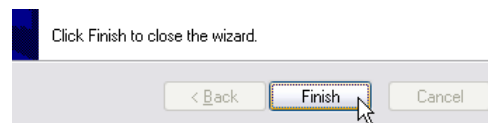
- d) Check the box: Include this location in the search, then select the folder to which you extracted the driver (see step 1; in this example ZIP-USB-MP).
- e) Click "Next".



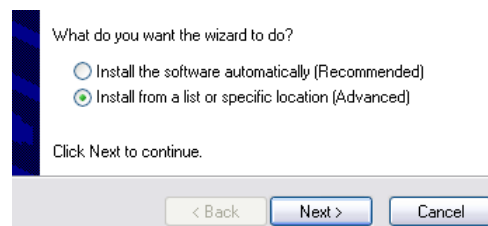
- f) The driver is now installed ...



- g) Click "Finish".



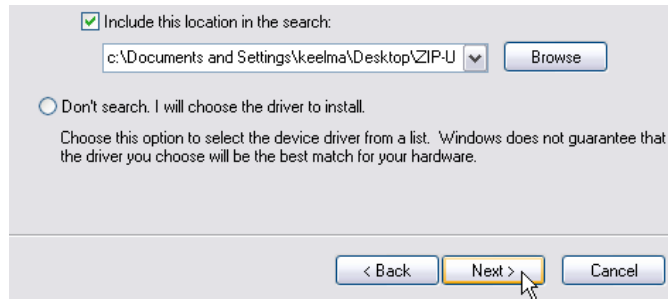
- h) After the driver has been installed, the USB port must be paired to a COM port. Click the radio button in the Wizard: Install from a list or specific location (Advanced).



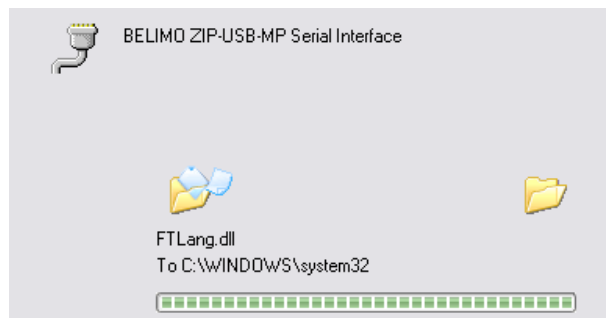
Installing

(Continue)

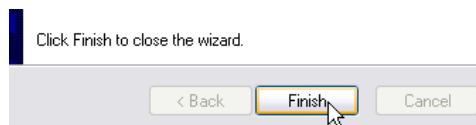
- i) Click "Next".



- k) The USB port is now paired to a COM port.



- l) Click "Finish".



Checking

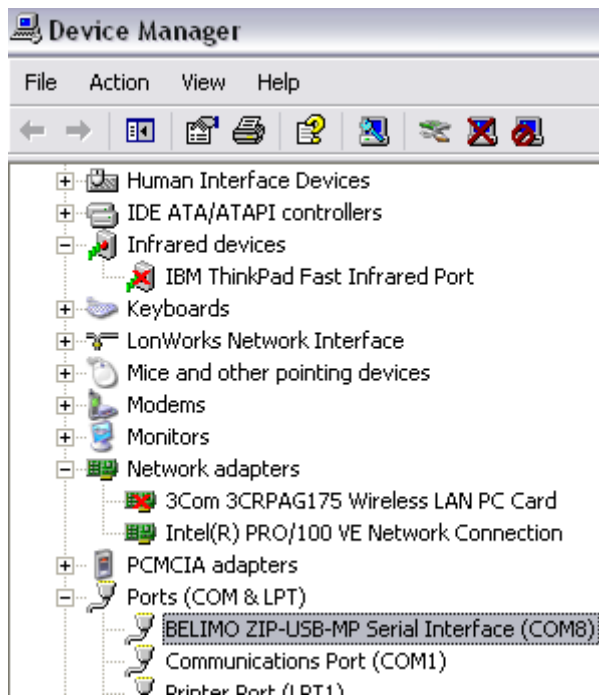
Checking the USB/COM connection on your computer

You must define a COM port number under "Options" in order to work with Belimo PC-Tool MFT-P V3. To find out which COM port number is the correct one, you need to check which COM port the USB port was automatically connected to by the system.

- a) Select "Settings/Control Panel/System" in the Windows 2000 or XP "Start" menu. On the "Hardware" tab, click "Device Manager". Under Windows VISTA select "Settings/Control Panel/Device Manager".



- b) You can see here that the USB port on the ZIP-USB-MP has been connected to COM 8, for example (a different COM number may apply on your PC).



Selecting the same COM port in PC-Tool Version 3

After selecting the COM port, for example "COM=8" (a different COM number may apply on your PC), you can set to work with the Tool.

